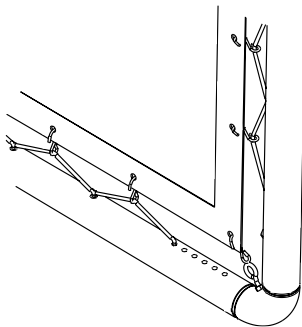


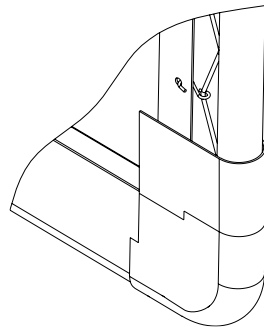
**SERIES 300 LACE AND GROMMET FRAME**

**Lace and Grommet Framing System**

- Constructed of 3" diameter aluminum tubing.
- Available with 7" wide Pro-Trim® Masking Cover for non-curved frames to conceal screen binding and lacing cord.
- The Curved Series 300 Frame may be specified to any degree of single axis curve with a maximum width of 90' wide.
- Lacing Cord and "S" Hooks included and positioned.
- Recommended for use with Da-Lite's front projection screen surfaces in sizes up to 90' wide and rear projection screen surfaces in sizes up to 40' wide (see page 80).



Frame includes pre-positioned lacing cord and "S" Hooks.



Optional Pro-Trim® Masking Cover conceals screen binding and lacing cord.

**Description**

- Series 300 Lace and Grommet Frame
- Series 300 Lace and Grommet Frame with 7" Pro-Trim® Masking Cover
- Series 300 Lace and Grommet Frame with Single Axis Curve

**LACE AND GROMMET SCREEN SURFACES**

**Grommet Style Custom Screen**

- Offers a permanent fixed or fly screen for lace and grommet frame.
- Heavy duty brass grommets provide even tensioning of the screen.
- Snap Button Style also available for mounting on provided studs.
- Various sizes and fabric options available with choice of white or black edge binding.



**Description**

Matte White surface (up to 8' high)

Matte White surface (over 8' high)

High Contrast Matte White surface

Video Spectra 1.5 surface

Silver Matte surface

High Power® surface

Da-Mat surface

High Contrast Da-Mat surface

Pearlescent surface

Cinema Vision surface

High Contrast Cinema Vision surface

High Contrast Cinema Perf surface

Silver Vision

Audio Vision surface

High Contrast Audio Vision surface

Da-Tex (Rear) surface

High Contrast Da-Tex (Rear) surface

Dual Vision surface

Nylon Lacing Cord

Shock (stretch) Lacing Cord