

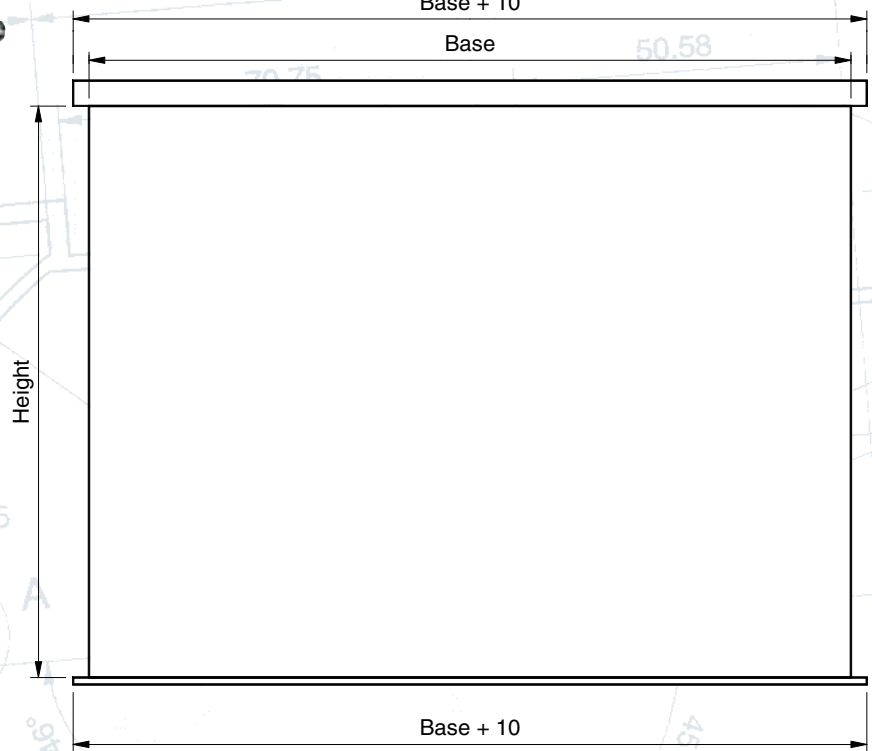
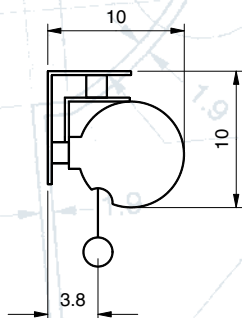
MANUAL SCREENS

# SUPER GEAR

The Super Gear screen is equipped with a clear anodized aluminum case which design is very modern.



Its Speed solo mounting system allows a direct wall or ceiling mounting installation made easier thanks to brackets in which the screen can slide and be blocked with a simple key.



M1 fire-resistant matt white projection surface for the PRO range.  
 New SRS (Slow return system) stopping device on the whole length which controls the progressive rising up of the weighing bar.  
 Anodized aluminum case for the PRO screen and case with white epoxy finish for the HC screen.  
 The HC range is supplied with a black out projection surface with black borders for the 4:3 formats and with an added 30 cm extra drop for the 16:9 formats.

## SUPER GEAR PRO

Image format Height x base (cm)	Matt white Reference number	Shipping weight in Kg	Net weight in Kg
<b>Square formats</b>			
150 x 150	MPP08B1150150	7	5
180 x 180	MPP08B1180180	9	7
200 x 200	MPP08B1200200	10	8
240 x 240	MPP08B1240240	12	10
<b>4:3 formats</b>			
150 x 200	MPP08B1150200	10	8
180 x 240	MPP08B1180240	12	10

## SUPER GEAR HC

Image format Height x base (cm)	Black out matt white Reference number	Shipping weight in Kg	Net weight in Kg
<b>4:3 formats</b>			
<b>Black borders on all formats</b>			
129 x 172	MPP09B1135180	9	7
144 x 192	MPP09B1150200	10	8
174 x 232	MPP09B1180240	12	10
<b>16:9 formats</b>			
<b>Black borders on all formats</b>			
97 X 172	MPP09B1101180	9	7
108 X 192	MPP09B1112200	10	8
130 X 232	MPP09B1135240	12	10

## FEATURES

### SPEED SOLO SYSTEM

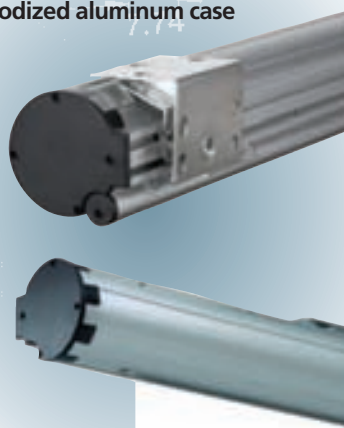
Easier and faster mounting by a single person.

Our new Speed Solo mounting kit permit you to save time during the installation.

- 1 Place the two stand-off brackets on the wall or on the ceiling.
- 2 Insert the screen in the brackets.
- 3 Secure the mounting.

The brackets are sliding along the case.

SUPER GEAR PRO  
Anodized aluminum case



SUPER GEAR HC  
Case with white epoxy finish

